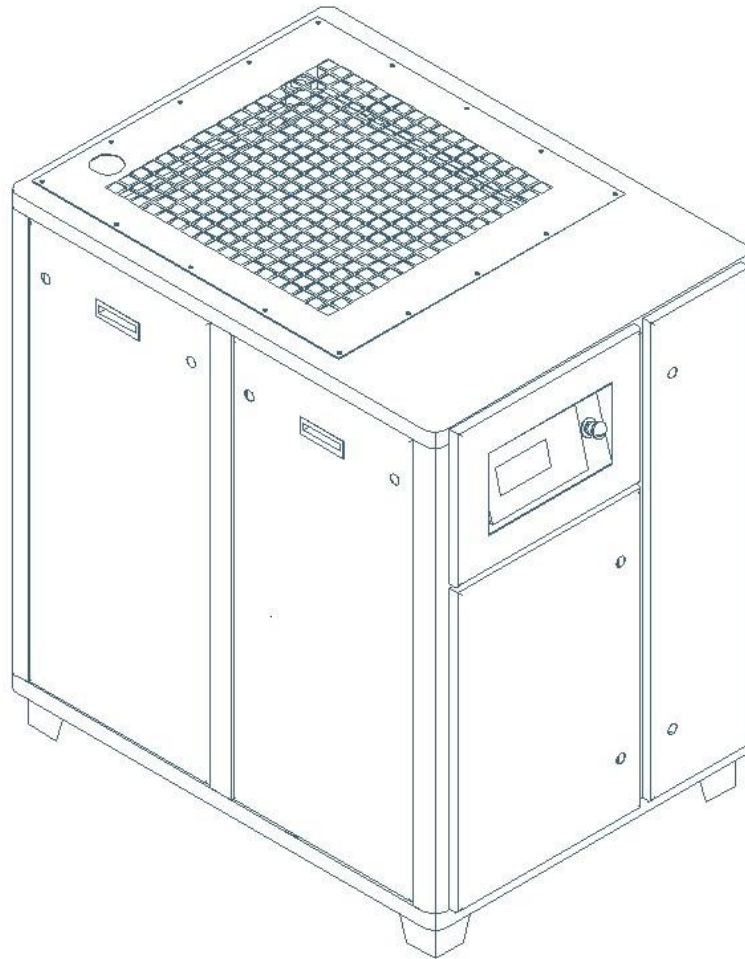


Fixed screw

air compressor

PARTS LIST

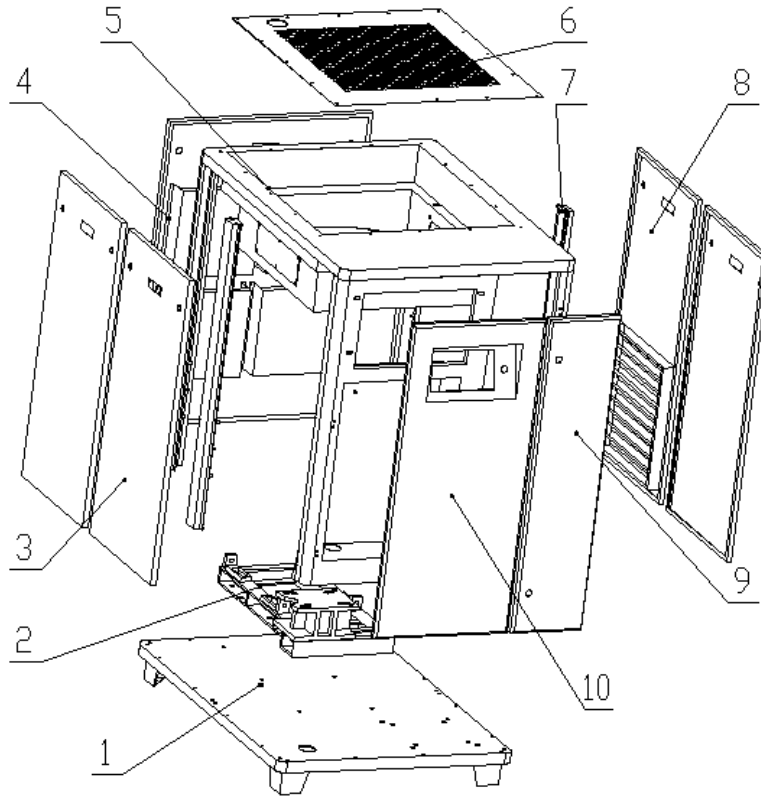
SB37



CONTENTS

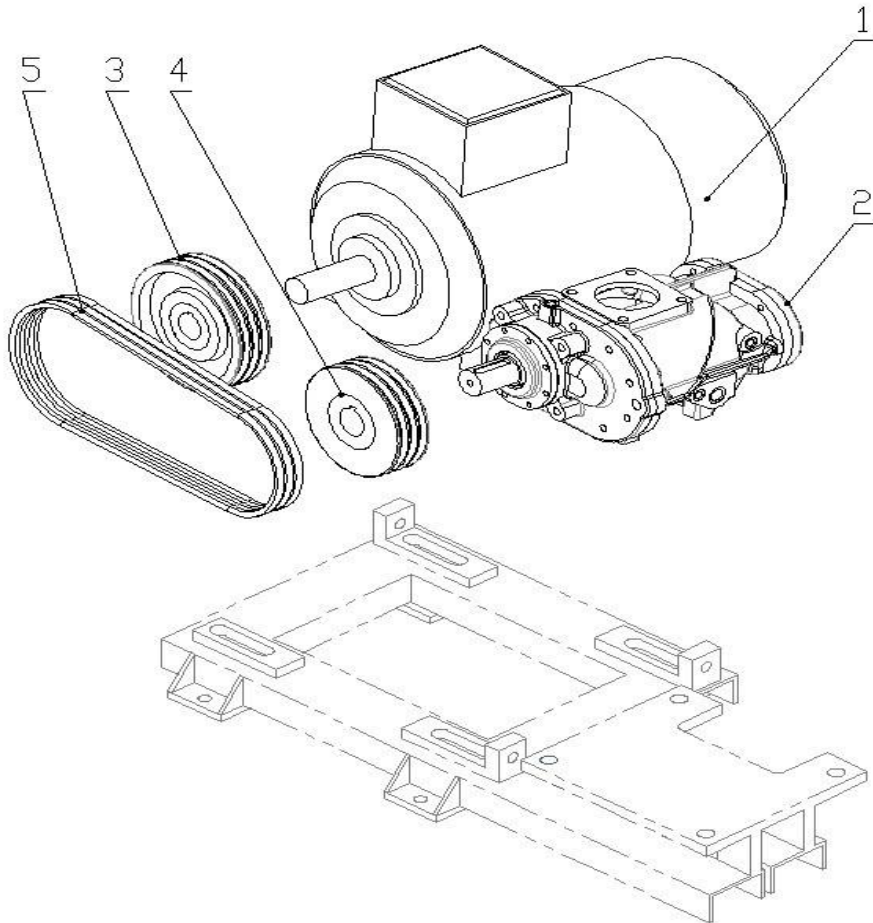
1.Enclosure.....	3
2.Main Component Assembly	5
3.Separation System	6
4.Pipe-Line System.....	7
5.Air Filter System.....	9
6.Cooling System.....	10
7.Electrical System	11

1.Enclosure



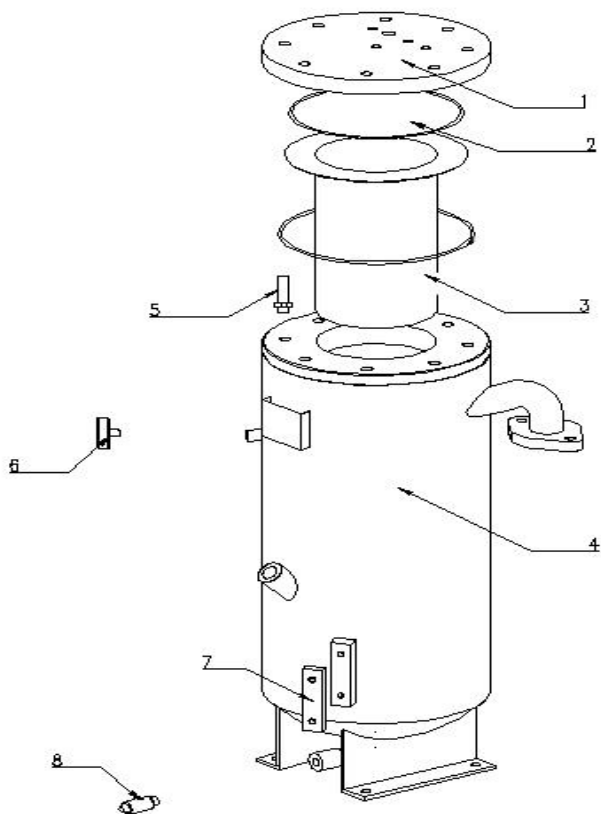
Item	ccn	Qty.	Description
1	4.13.111601	1	Base
2	4.13.111101	1	Vibration Frame
3	4.13.110401	3	Door
4	4.13.110601	1	Back Door
5	4.13.114001	1	Frame
6	4.13.111401	1	Cover
7	4.13.112401	1	Middle Column
8	4.13.113001	1	Right Door
9	4.13.110301	1	Front right door
10	4.13.110201	1	Electrical box door

2.Main Component Assembly



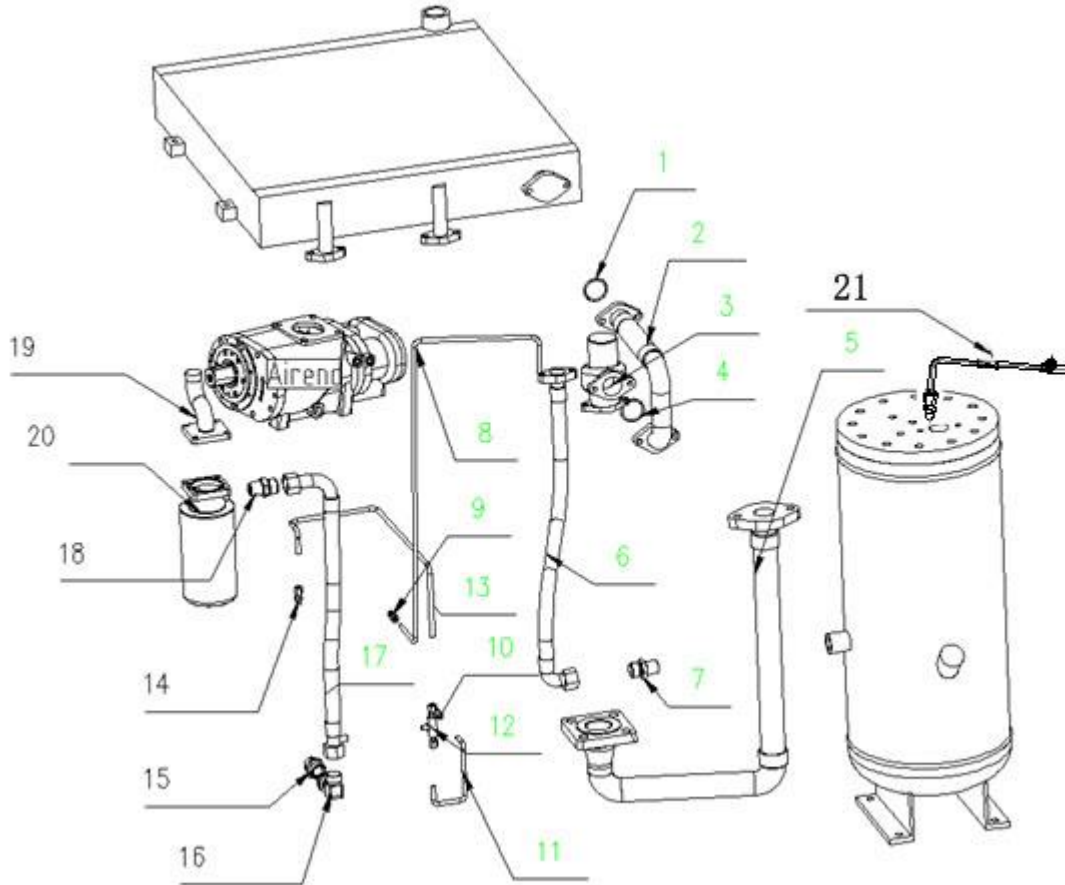
Item	ccn	Qty.	Description
1	3.60.037005	1	Motor
2	3.47.020017	1	Airend
3	3.44.011904	1	Motor belt pulley (8bar)
3	3.44.011804	1	Motor belt pulley (10bar)
4	3.44.011804	1	Ariend belt pulley (8bar)
4	3.44.011904	1	Ariend belt pulley (10bar)
5	3.44.111500	4	Belt

3. Seperation System



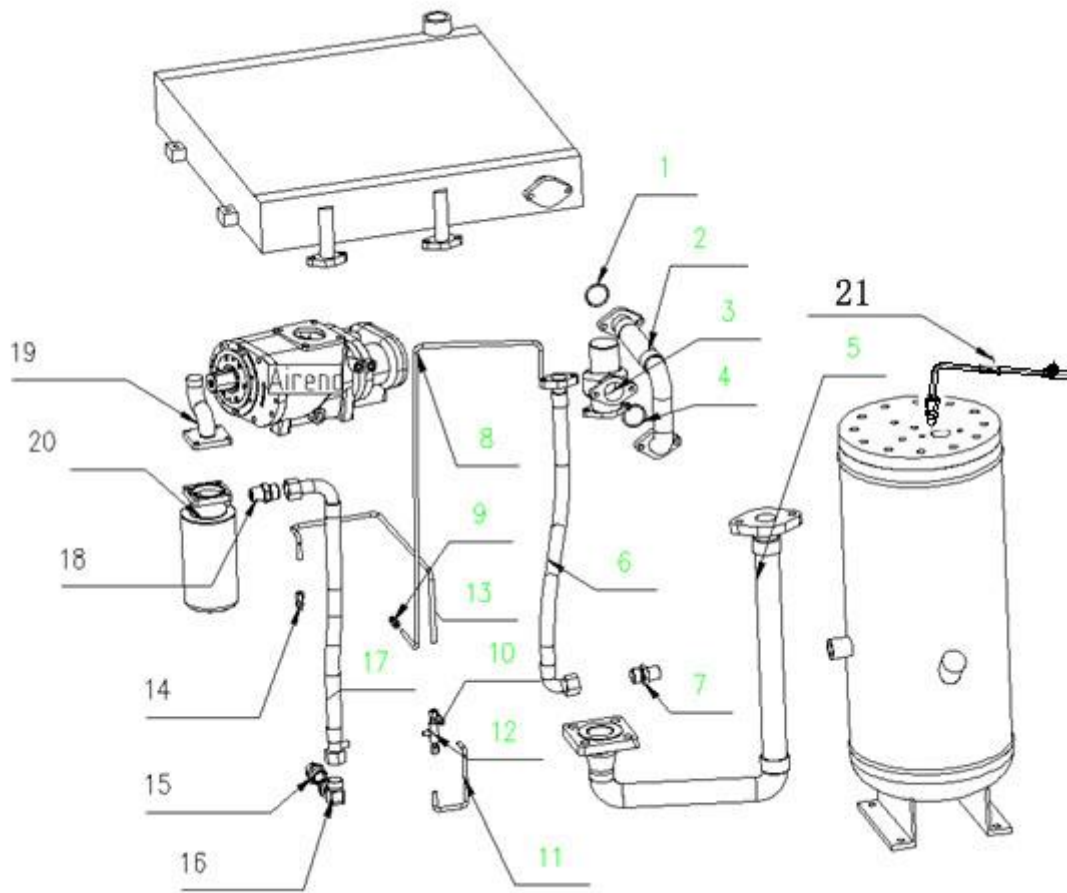
Item	ccn	Qty.	Description
1	4.22.325001	1	Cover
2	3.37.215005	2	Asbestos
3	02.03.01854	1	Seperator Elements
4	4.22.325001	1	Separator tank
5	3.32.122006	1	Safety valve (8bar)
5	3.32.122007	1	Safety valve (10bar)
6	3.37.500001	1	Pressure gauge
7	3.37.401080	1	Oil level gauge
8	3.32.131501	1	Ball valve

4. Pipe-Line System



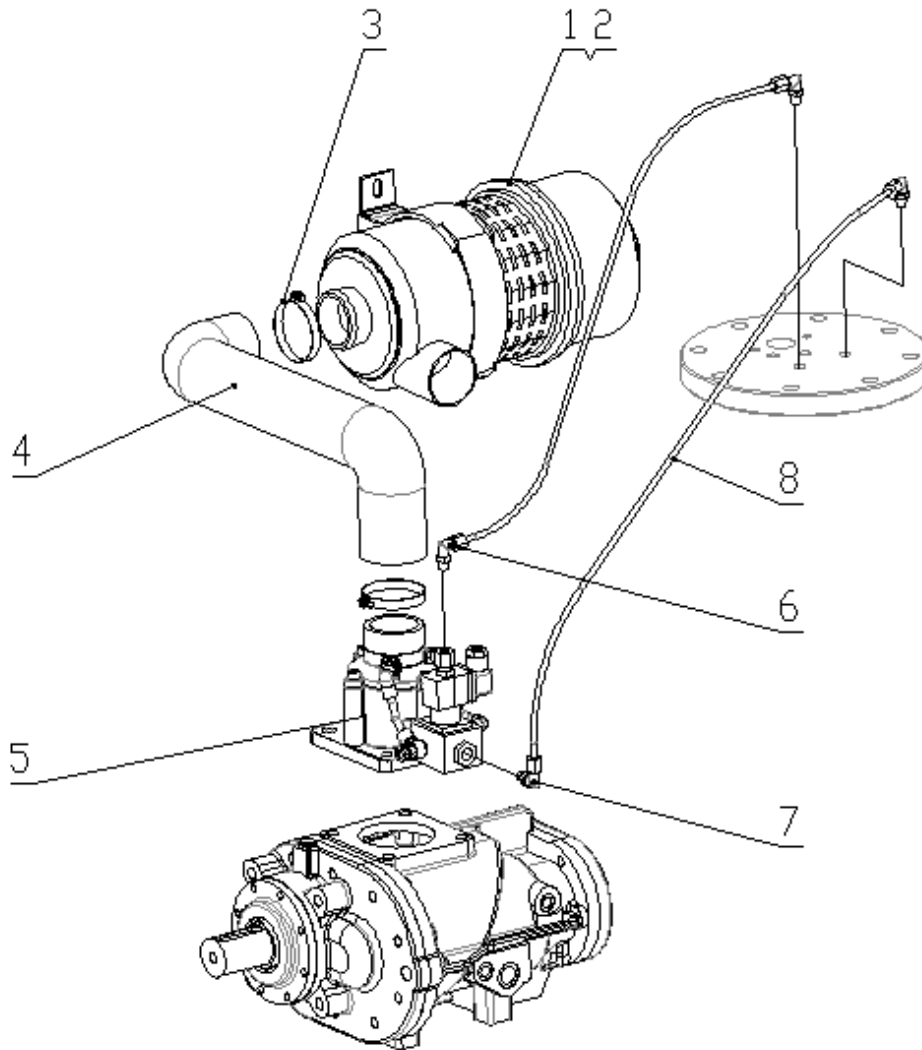
Item	ccn	Qty.	Description
1	3.37.204502	1	O-ring
2	4.33.213231	1	Air pipe
3	3.32.122006	1	Minimum pressure valve
4	3.37.204502	1	O-ring
5	4.33.405651	1	Oil pipe
6	4.32.207002	1	Oil pipe
7	4.31.053001	1	Joint
8	4.34.060101	1	pipe
9	4.31.080601	1	Joint
10	4.31.020601	1	Joint
11	4.34.080101	1	pipe
12	4.31.020201	1	Joint
13	4.34.060101	1	Joint

4. Pipe-Line System



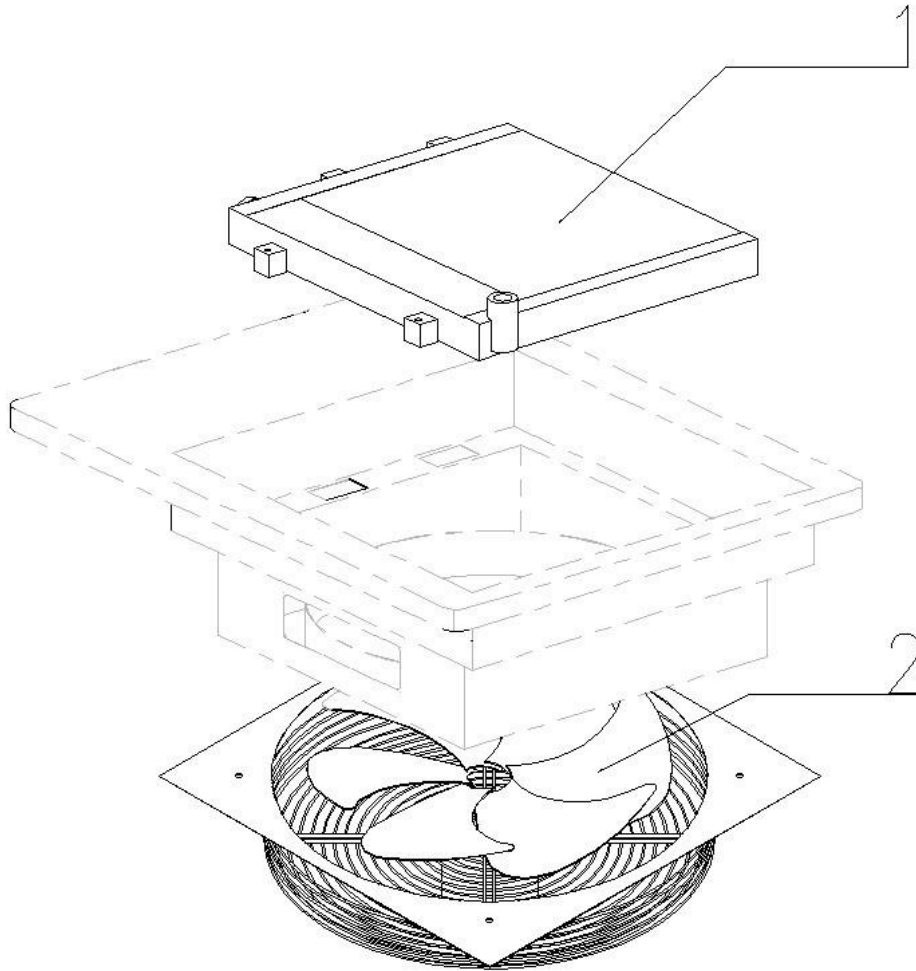
Item	ccn	Qty.	Description
14	4.31.020801	1	Joint
15	4.31.053001	1	Joint
16	4.31.053002	1	Joint
17	4.32.206002	1	Oil pipe
18	4.31.053001	1	Joint
19	3.32.010001	1	Base
20	02.01.00805	1	Oil filter
21	3.32.020100	1	Check valve

5. Air Filter System



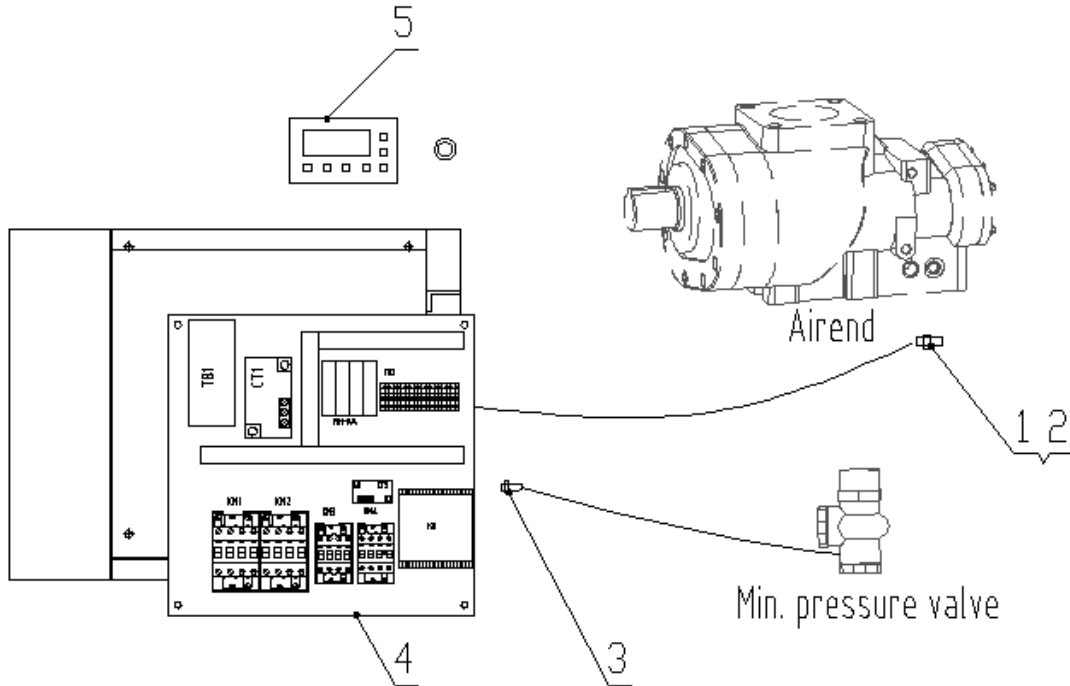
Item	ccn	Qty.	Description
1	02.02.32531	1	Air Fliter Elements
2	3.38.102531	1	Air Fliter Housing
3	4.52.109501	2	Clamp
4	4.37.080002	1	Pipe
5	3.32.100651	1	Intake vavle
6	4.31.021001	1	Joint
7	4.31.020801	3	Joint
8	4.37.080101	2	Pipe

6. Cooling System



Item	ccn	Qty.	Description
1	4.21.103701	1	Cooler
2	3.47.106101	1	Cooling Fan

7. Electrical System



Item	ccn	Qty.	Description
1	3.62.700001	1	Temperature sensor
2	4.31.020201	1	Joint
3	3.62.701001	1	Pressure sensor
4	3.62.388001	1	Electric control panel
5	3.62.388001	1	PLC